

USFCONTRACT

cork décor

TAKING NATURAL CORK® TO THE EXTREME!

Cork Décor from Natural Cork® takes traditional cork flooring and adds extreme durability to create a collection of unique and eclectic eco-friendly flooring visuals designed to perform in the most demanding commercial applications.

ENDURA AR+ NANO™

Advanced generation high performance commercial finish incorporating nano-bead technology to produce durability ratings not typically found in traditional cork floors. The nano beads are embedded into the top layer to provide improved scratch, scuff, stain, and slip resistance.

ACRODUR® WATER BASED BINDER

Developed by BASF, Acrodur® eliminates harmful ingredients from the binding process, such as phenol, formaldehyde, and isocyanates. Acrodur® significantly reduces the level of emissions without compromising the technical performance of the floor.

ATTACHED VINYL UNDERLAYMENT

A vinyl underlayment is applied to the underside of the cork veneer making it highly resistant to tearing and providing a virtually impenetrable moisture barrier, further extending the life of the floor.

Take the Next Step in sustainable commercial floors. At USFCONTRACT, we are in full stride. Visit us on the web at usfcontract.com or call **1.877.292.4044**

15 Year Commercial Wear
Lifetime Structure

CORK DÉCOR FLOORS:

- › Exceed E0 and CARB 2012 standards for emissions
- › Comply with the Lacey Act
- › Contribute to satisfying LEED credits:

MR 4.1 RECYCLED CONTENT

MR 6.0 RAPIDLY RENEWABLE MATERIALS

EQ 4.4 LOW EMITTING MATERIALS



cork décor



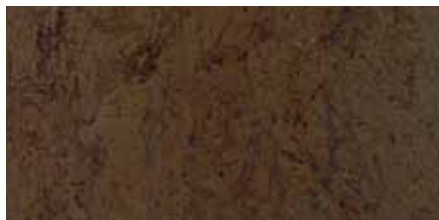
40TV222



40TV241



40TV221



40TV212



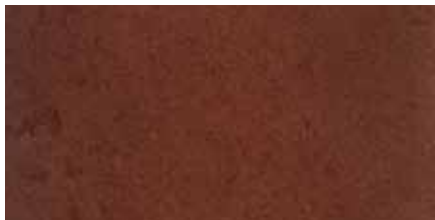
40TV211



40TV220



40TV240



40TV230



40TV210

